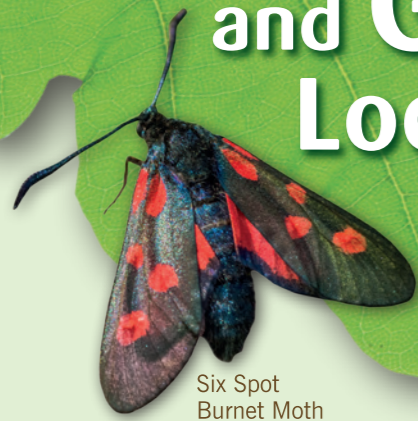


# Glen Parva and Glen Hills Local Nature Reserves



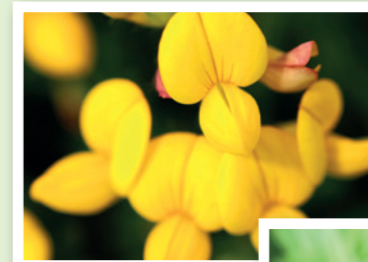
Six Spot Burnet Moth



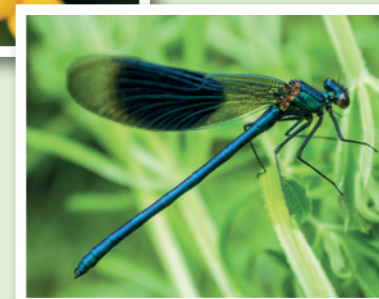
Tortoiseshell Butterfly



Great Spotted Woodpecker



Birdsfoot Trefoil



Banded Demoiselle Dragonfly



Common Knapweed

A fantastic mosaic of wildlife habitats, from ponds and meadows to woodland and hedgerows, can be found at this 12 hectare site. It is home to an array of wild flowers and creatures such as the green woodpecker, meadow pipit, dragonflies, butterflies and bats. A real gem on the doorstep of Glen Parva for everyone to enjoy!

The meadows and spinney at Glen Parva Local Nature Reserve are designated as Local Wildlife Sites as the different habitats sustain a wonderful diversity of wildlife including birds, mammals, amphibians, and butterflies. Hedgerows, scrub, ponds and ditches also support a range of flora and fauna.

The two largest meadows contain areas of species rich neutral grassland, including wildflowers such as black knapweed, great burnet, and bird's-foot trefoil – also known as “eggs and bacon” because of the reddish tips to the yellow flowers. The species are characteristic of old meadows, many of which have been lost through agricultural improvement with pesticides and chemical fertilizers. These in turn support a range of invertebrates including grasshoppers, bees, and butterflies such as ringlet, gatekeeper and small tortoiseshell.

Ancient wildflower meadows were cut or grazed in the same way for centuries; allowing wild flowers to flourish. Similar techniques are used on this Reserve where grassland is mowed in late summer after the flowers have set seed. Cuttings are then removed to keep the nutrient levels low in the soil creating ideal conditions for the flowers to spread.

Aylestone Holt Spinney is mature woodland dominated by ash and oak where areas have regenerated naturally. The remainder of the spinney is plantation and includes huge horse chestnut “conker” trees, beech and sycamore.

The wood supports wildflowers such as Bluebell, Cow Parsley, Herb Bennet, Dogs Mercury, Hedge Woundwort, Hedge Garlic and Wild Arum otherwise known as Lords and Ladies. The food and the shelter the spinney provides means birds such as Great spotted woodpecker can thrive and you will see many of the dead trees have holes in them that mark their presence.

The neighbouring Holt Acre woodland is much younger than the Spinney. Volunteers coordinated by Glen Parva Parish Council work hard to keep the area in good order for people and wildlife. The work of the volunteers includes traditional methods of managing woodland such as coppicing, tree planting, path maintenance and wildflower planting.



- Glen Parva Local Nature Reserve
- Glen Hills Local Nature Reserve
- Wildflower Meadow
- Sustrans Cycle Route
- Paths
- Mown Paths
- Access Points



Grey Heron



For further information please contact  
Glen Parva Parish Council. Tel: 0116 277 1450.